

robo-kut

The **AKS Cutting Systems “robo-kut”** is the leading **5-axis Bevel Head** in the plasma cutting industry, protected by **several U.S. patents.**

The **AKS “robo-kut”** allows for +/-45 degree cutting for **A, V, K, X, top & bottom Y style bevel cuts.**

The **AKS “robo-kut”** is designed with robotic style precision gearing that can be incremented in arc-seconds, or fractions of degrees, for the tightest precision and accuracy in the industry.

The **AKS “robo-kut”** includes these standard features:

- **Robust, Rigid and Compact** and **sealed** for **Protection and Cleanliness**
- **Machined Solid Billet Aluminum Block** without weldments or stamped parts, like competitive cutting heads
- **Compact Lightweight High-Tech Design** weighing less than **50 lbs**
- **Magnetic Breakaway Head** to prevent damage upon crash
- **Unlimited Torch Lead Wind-Up** with no repositioning required
- **Smooth and Accurate Motion** allows for **cutting Small Holes** to **Minimize Taper** associated with plasma cutting
- **Patented Automatic Calibration Set-Up Routine** insuring repeatability
- **THC – Torch Height Control** – automatically setting torch height
- Hypertherm **“Bevel Machine Interface,” “Bevel Machine Post Processor”** and **“True Bevel™”** Software Modules
- **AKS 3-day “Advanced Bevel Training”**

NOTE: The **AKS “robo-kut”** is the most powerful 5-axis Plasma Cutting Bevel Head on the market. Unlike less capable competitive plasma bevel heads, the **AKS “robo-kut”** can produce 1/2” diameter **“bolt ready holes”** in 1” thick steel plate. The **AKS “robo-kut”** offers 1/2” : 1” ratio for *hole diameter : thickness*, superior to competitive machines which are limited to traditional 1” : 1” ratio.

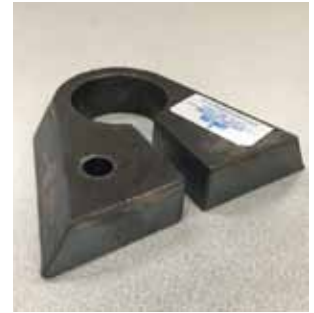


aks
CUTTING SYSTEMS



- 1.25" thick mild steel
- 45° 4-sided bevel around perimeter
- 3/4" dia. bolt hole utilizing **AKS "robo-kut"**
- 65"/min cutting speed using HPR400XD
- cycle time 42 secs

- 1" thick mild steel
- left side only 1/2" inch gap from the right side
- 1" dia. hole utilizing **AKS "robo-kut"**
- 85"/min cutting speed using HPR400XD
- cycle time 34 secs



- 1" thick mild steel
- three (3) 1/2" dia. bolt holes utilizing **AKS "robo-kut"**
- All edges continuous beveled at 37°
- 85"/min cutting speed using HPR400XD
- cycle time 74 secs



- .375", .250", and .200" diameter holes in 1/4" mild steel plate
- each hole cut in just seconds with HPR130XD set on 50 amp
- holes may be manually tapped secondarily



- continuous single perimeter cut with 27.5° bevel on both sides
- NO wind-up
- 3/4" mild steel cut with HPR260XD
- 90"/min cutting speed
- cycle time 2 mins, 10 secs

- this .200" hole was cut on **AKS "accu-kut"** with **"robo-kut"** with almost zero taper, and then the hole was manually tapped for a 1/4-20 bolt inserted



"accu-kut"

The **AKS "robo-kut"** can be installed on either **AKS "accu-kut"** or the **AKS "dura-kut"** models.

The **AKS "robo-kut"** upgrades your standard high-definition plasma straight torch to a fully programmable 5-axis Bevel Head for:

- beveling
- countersinking
- weld-prep cuts
- tightest smallest holes - 1/2" : 1



"dura-kut"



A TRADITION IN EXCELLENCE
FOR OVER 100 YEARS